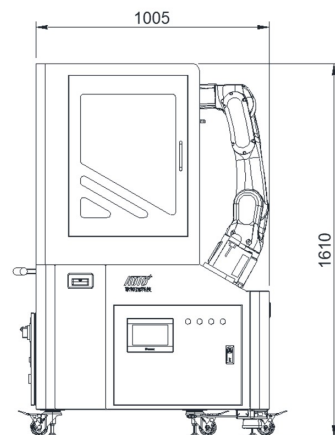
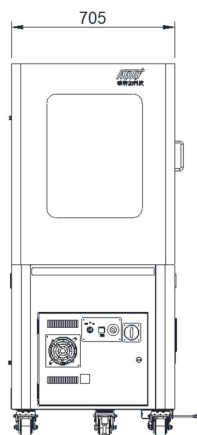
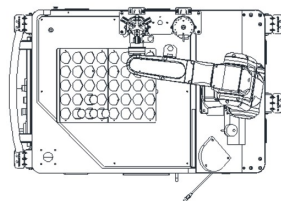


OKUMA GENOS Series Automatic System

機械手臂彈性自動化單元 Movable Robot Cell with OKUMA CNC Lathe



特徴: Features:

- 加工機取放料効率化。
Load/Unload efficiently.
- 機械手臂、送料機、附加功能等提供客製選擇。
Robot, stocker, options customization.
- 更簡單更快速的安裝。
Easier and Faster Installation.

Autoplustek Movable Robot Cell

Item 項目	Specification 規格
外觀尺寸、重量 Space Occupied, Weight	1,005mm*705mm*1,610mm L*W*H 390 kg (With 7kg-payload robot)
機械手臂、荷重 Robot、Loading	工業用、協作機械手臂 荷重：5、7、10kg Industrial Robot OR Collaborative Robot: 5, 7, 10kg-payload
送料裝置 Work Stocker	平板治具、多層抽屜式、堆疊轉盤式等。 Pallet type, Tray Changer type, Turntable stacking type, etc.
附加功能 Option	快換裝置、視覺檢測、安全區域雷射掃描器等。 Tool changer, Automated optical inspection, Safety laser scanners, etc.

※ Above specification can be changed depended on customer requirement.
 ※ 製品仕様や設計などが変更される可能性があります。
 ※ 以上數值均為參考規格，依照客戶需求變更設計。



設備應用 Application

更簡單更快速的安裝。
Easier and Faster Installation :

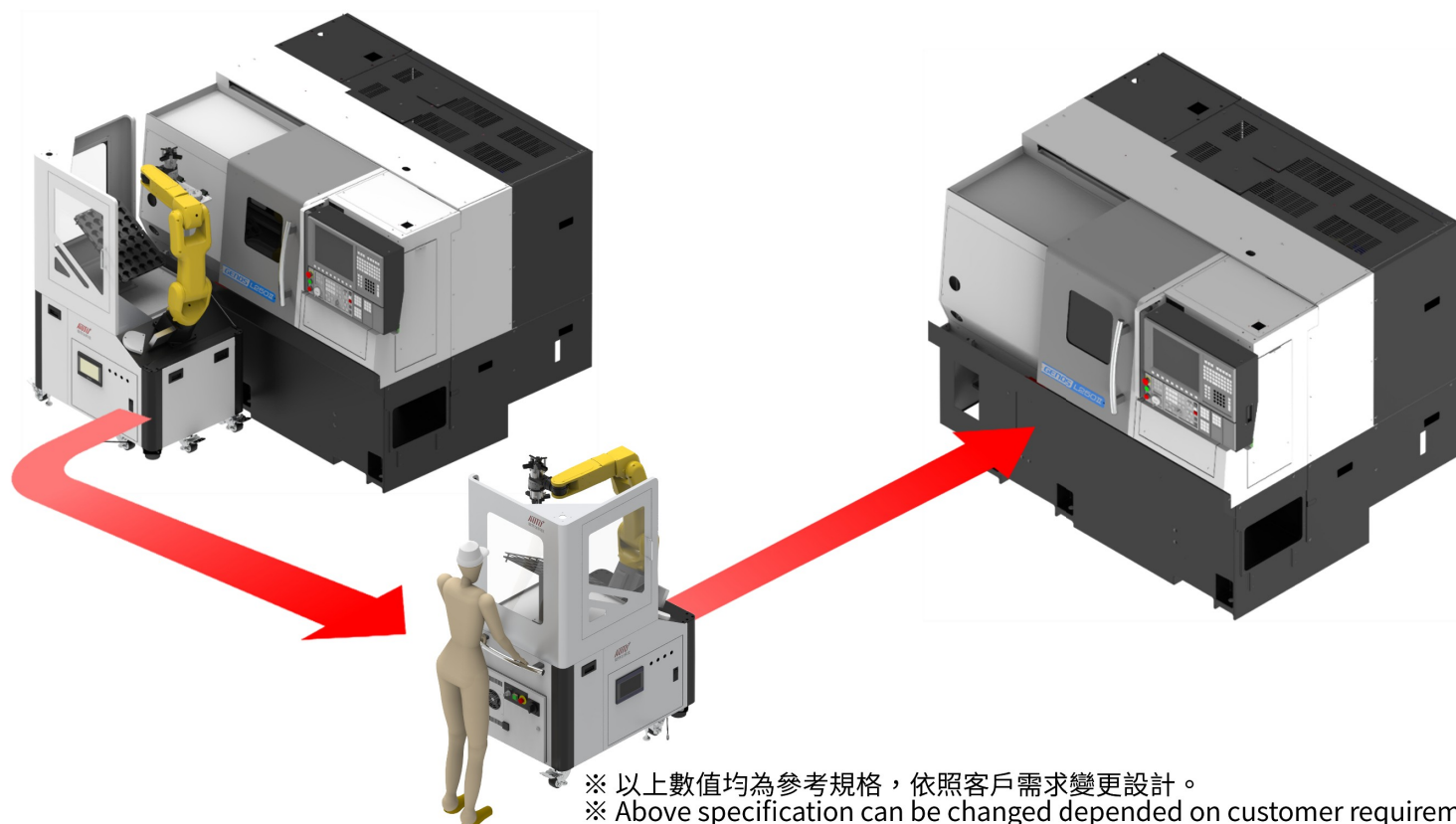
於產線實現工件取放的彈性生產與迅速設置。
Realization of FMS and quick installation in your production process.



Lathe 1

Move to

Lathe 2

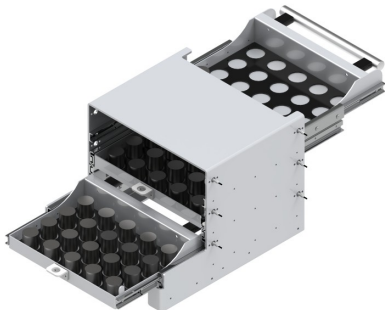


※ 以上數值均為參考規格，依照客戶需求變更設計。
※ Above specification can be changed depended on customer requirement.

設備製品客製化 Product customization

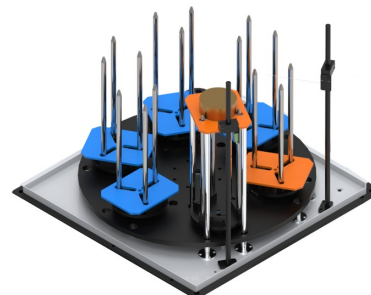
供料設備客製化 Work stocker type customization:

應用方案
More stocking solutions.



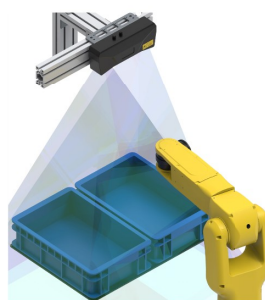
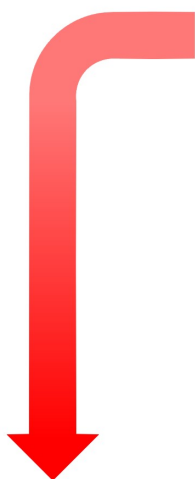
抽屜換盤、立體式供料
Tray changer/ stocker

工件尺寸: $\varnothing 45\text{mm} * 20 \text{ PCS} * 2 \text{ Pallet}$
盤面尺寸: $200\text{mm} * 280\text{mm}$

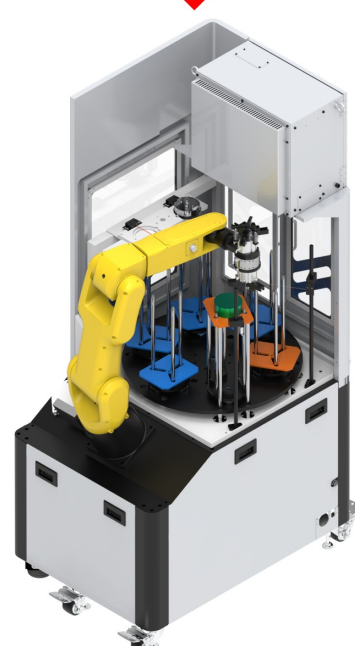
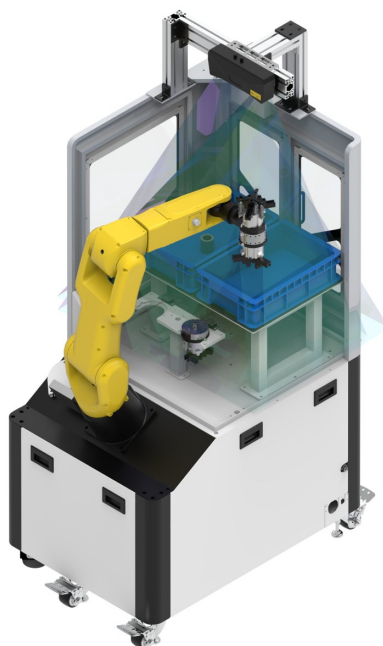
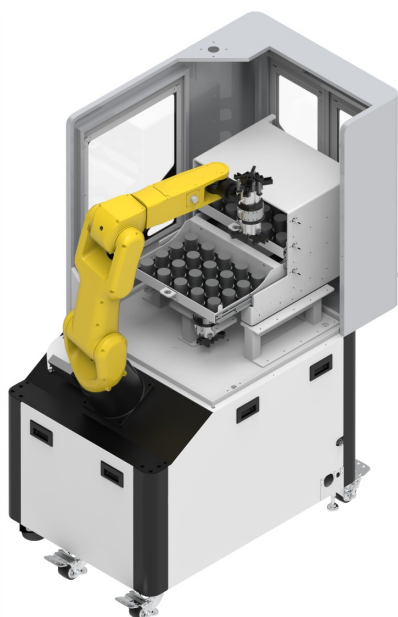


堆疊式旋轉供料
Turntable stacking

工件尺寸: Max: $\varnothing 85\text{mm}$, Min: $\varnothing 25\text{mm}$
堆疊高度: 300mm



視覺辨識系統
Vision system & Storage

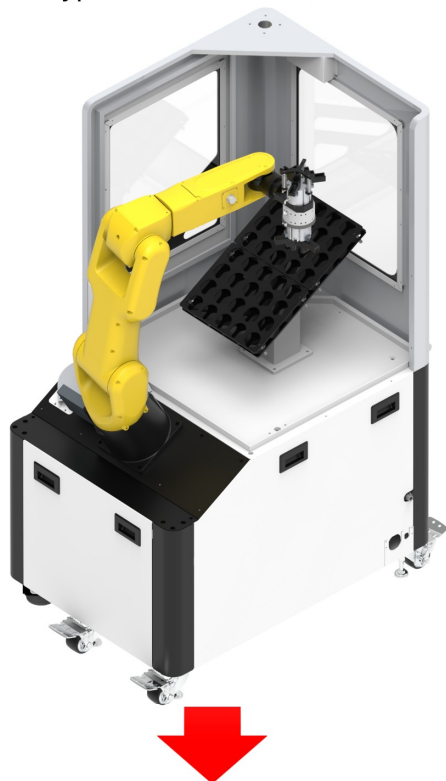


※ 以上數值均為參考規格，依照客戶需求變更設計。
※ Above specification can be changed depended on customer requirement.

設備製品客製化 Product customization

機械手臂應用 Robot application:

對應多種型式、品牌機械手臂
Multi-type robot models.



工業型機械手臂 Industrial robot :



Payload 7kg : Fanuc LR Mate 200iD/7L

協作型機械手臂 Collaborative robot :



Payload 5kg : Fanuc CRX-5iA



Payload 10kg : Fanuc CRX-10iA

*本設備提供客戶選用其他製造商、廠牌、型號之機械手臂。

*Default robot type. Compatible with other makers, brands, and types of robots.

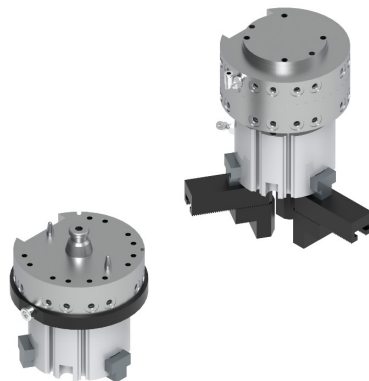
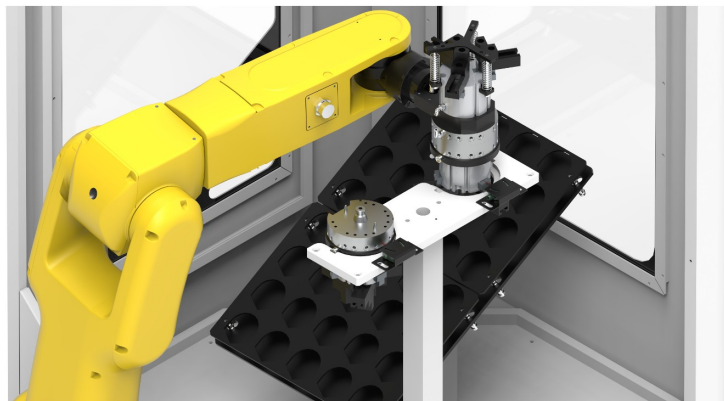
※ 以上數值均為參考規格，依照客戶需求變更設計。

※ Above specification can be changed depended on customer requirement.

附加功能 Options

快換工具夾爪: Robot Tool Quick Changer :

夾爪更換效率化
End-effector change improvement.



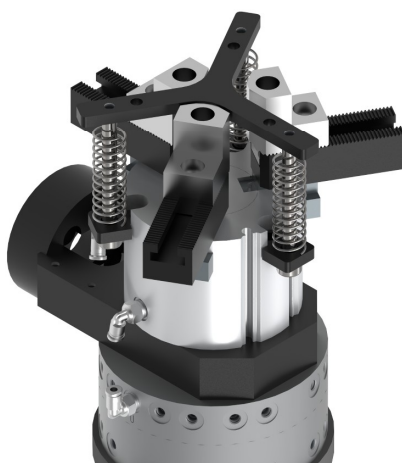
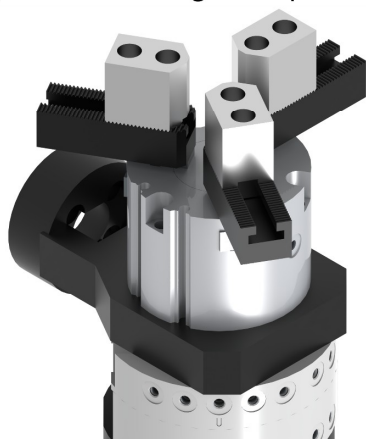
 mindman

*CHANGER :
MINDMAN MCTC-20R

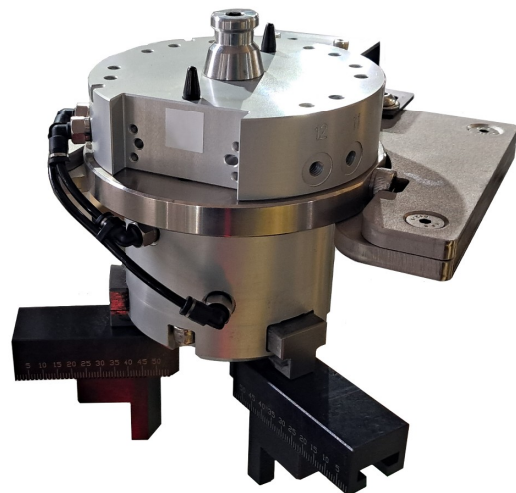
*GRIPPER :
MINDMAN MCHG2-50M

夾爪配件: Gripper option :

可調整齒排爪與頂料裝置
Adjustable rack finger and pusher.

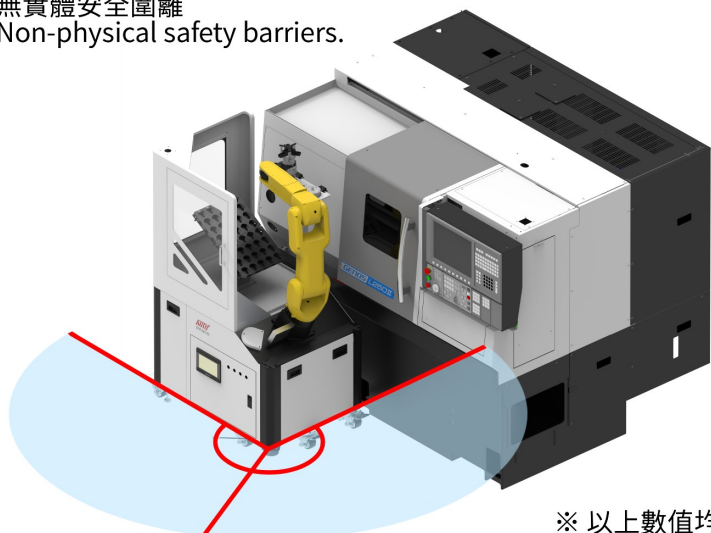


工件尺寸: Max: $\varnothing 85\text{mm}$, Min: $\varnothing 25\text{mm}$



安全區域雷射掃描器: Safety Laser Scanner :

無實體安全圍籬
Non-physical safety barriers.



*SICK nanoScan3

Range(範圍): Radius(半徑) 3M
Angle(角度): 275°

※ 以上數值均為參考規格，依照客戶需求變更設計。
※ Above specification can be changed depended on customer requirement.